

Engage Services is a process where the strengths, culture and challenges of a youth and their family are identified, and a plan is developed that provides both formal and informal supports to assist the youth and their family to have safety, stability and success.

Our beliefs:

The family should remain together while maintaining family safety.

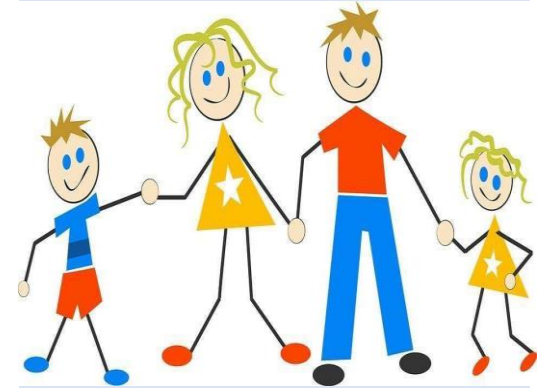
Families are full partners in their treatment and are the “experts” of their family.

You may benefit from Engage Services if you and/or your child are experiencing the following:

- **Difficulty in school**
- **Behavioral issues**
- **Aggressive or violent behaviors**
- **Difficulty following rules**
- **Court involvement**
- **Child Protective Services**
- **Mental Health diagnosis**
- **Drug and/or alcohol abuse**
- **Difficulty in coordinating multiple services**

Engage Services
1913 Estelle Avenue
Steubenville OH 43952

Engage Services



Engaging families to grow through supportive services in their community.

SERVICE COORDINATOR:

A Service Coordinator will be assigned once a referral for Engage Services has been completed. The Service Coordinator will contact the family for an assessment of needs. A team meeting will be held to discuss family needs and eligibility for services. The networking team will meet with family member(s) to discuss reason for referral. Follow up on progress will occur as needed or as requested by the family. Participation is necessary to meet program requirements.

Service Coordinator hours are Monday through Friday 8:00 am until 4:30 pm.

*Note: All referrals for Multi-System Youth Funding (MYS) must be enrolled with Engage Services for one (1) month of services.

Engage will offer the following:

- Non-clinical in home parent/child coaching
- Non-clinical parent support groups
- Parent education
- Mentoring
- Respite care (including summer camp)
- Transportation (cab/taxi fares, gas vouchers)
- Safety and adaptive equipment
- Structured activities to improve family functioning
- Parent advocacy and service coordination



Engage Services maintains confidentiality and only releases information with approval from the family.

Information received through this service is also protected through federal regulations governing Confidentiality of Alcohol and Drug Abuse Patient Records 42 C.F.R. Part 2 and the Health Insurance Portability and Accountability of 1996, (HIPPA) 45 C.F.R. Parts 160 and 1.

For referrals please contact:

Linda Trushel, Supervisor
Jefferson County Family and
Children First Council
Email: ltrushel@jcesc.org
Cell: 740.491.0548
Fax: 740.792.4005

Engage Services
1913 Estelle Avenue
Steubenville OH 43952



**Ohio Family &
Children First**